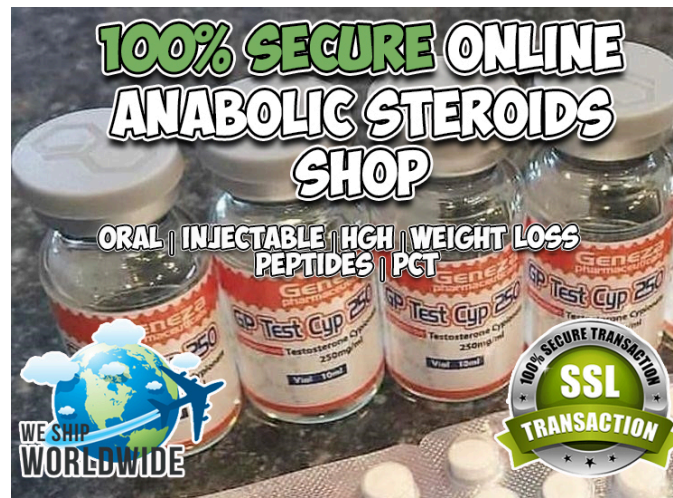




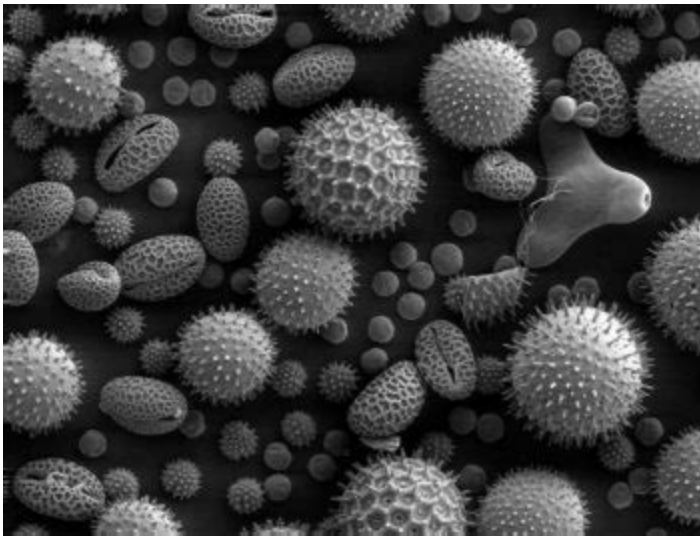
Trenbolon 300 Mg Best Darknet Markets #xrd9NF5



CLICK HERE TO SHOP ONLINE: <https://t.co/MuLJDIUvFo>



For this reason, weekly total dosing for trenbolone enanthate is a little higher than for the acetate. For the enanthate, weekly total dosing is typically 300-800 mg. Unlike trenbolone acetate which has a half-life of only about 1 day and therefore should be injected daily, trenbolone enanthate is typically injected 2-4 times per week. Trenbolone 300 mg/ml. Trenbolone (Injectable) Trenbolone is arguably the most powerful steroid available to bodybuilders, causing rapid changes in body composition that take place within the first week of use and to very specific targets, the main one being the gain of lean body mass.



Trenbolone 300, trenbolone 300 mg. Weight loss achieved with the help of the steroid is long lasting, trenbolone 300. To prevent libido drop, Anavar is best stacked with testosterone. Winstrol (Cutting / Strength) Bodybuilders all over the world use Winstrol to give them a herculean performance in the gym.

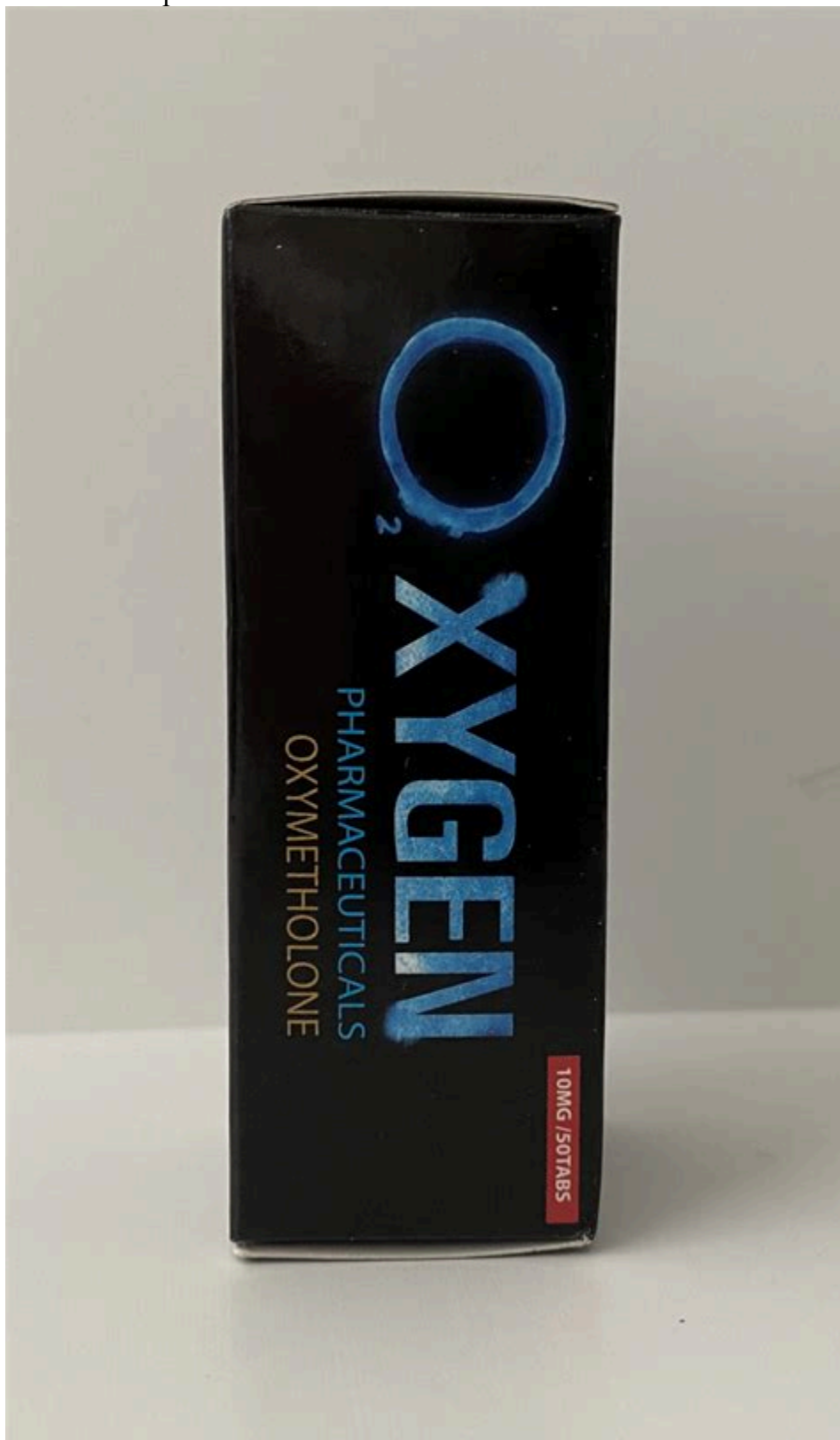


Trenbolone Enanthate 300mg x 10ml; Related products. Injections Decadurabolin 300mg. 0 out of 5 \$ 35.00. Add to cart. Quick View. Injections Masterone Enanthate 300mg. 0 out of 5 \$ 65.00. Add to cart. Quick View. Injections HCG 5000iu with bac water. 0 out of 5 \$ 40.00. Add to cart. Quick View. Injections Testosterone Propionate 100mg. 5.00 out. [look these up](#)



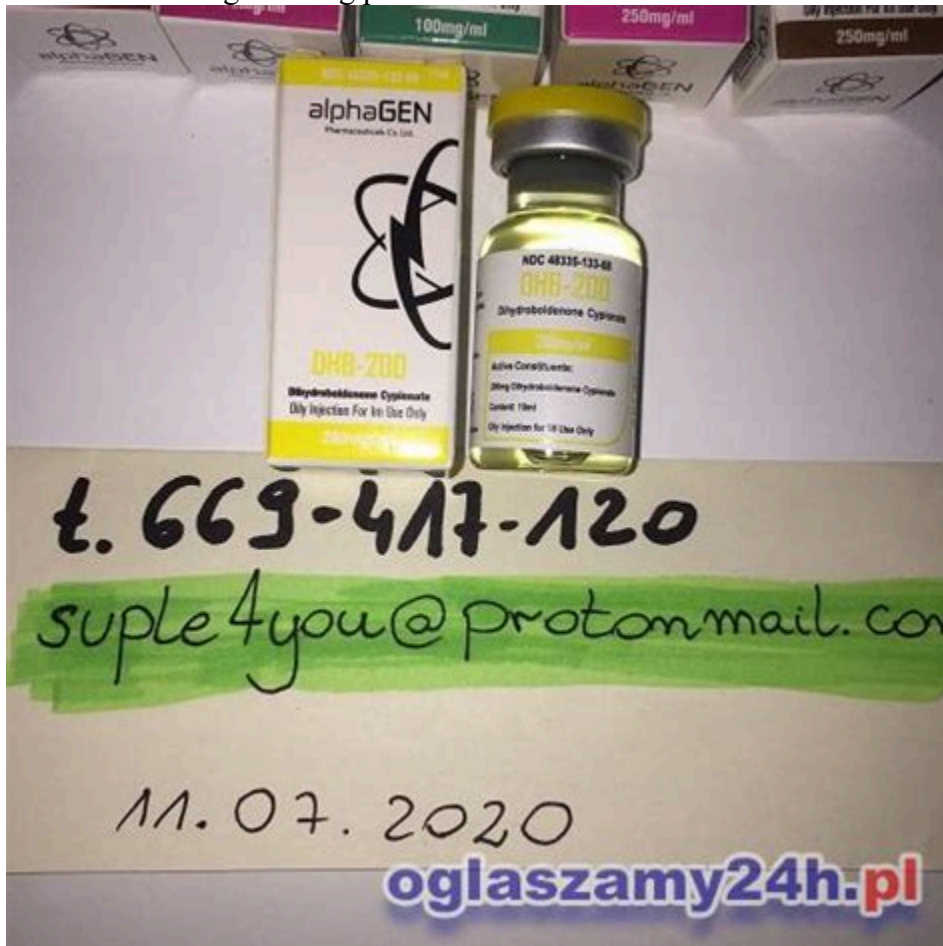
This drug involves injection up to 2 times a week. The optimal dose for athletes is about 250-300 mg over 7 days. Due to the lack of need for daily injections, this drug is considered to be more convenient and versatile. Trenbolone Enanthate has almost no aromatization, which has a positive effect on the overall effectiveness of the cycle.

In the cycle of cutting - a full cycle of accumulation is recommended of 50 to 100 mg of Trenbolone every 2nd - 3rd day. Similarly, an advanced user may also use a higher amount of trenbolone per dose (reaching up to 200 mg every 2-3 days). Of course, increasing the dosage, an increase of serious side effects risk is possible.



Trenbolon 300 Mg - Tren De Portugal A Italia. For this reason, weekly total dosing for trenbolone enanthate is a little higher than for

the acetate. For the enanthate, weekly total dosing is typically 300-800 mg. Unlike trenbolone acetate which has a half-life of only about 1 day and therefore should be injected daily, trenbolone enanthate is. Trenbolone's dosage range is typically 75 mg- 100 mg. Due to its short ester length; it should be administered on a daily basis, or even every other day through an intra-muscular injection. Regardless of the purpose at hand, be it cutting or bulking, most people will find Tren E to be satisfactorily effective within the 300 mg- 500 mg per.



Trenbolone Acetate Dosage:

How much Tren Ace should you use? I have went as high as 600 mg/week before, and I will tell you that side effects became much worse with no added benefit for me. I'd stick to 300 mg/week. Most of your Tren is going to either be 75 mg/ml or come as 100 mg/ml. [more information](#)